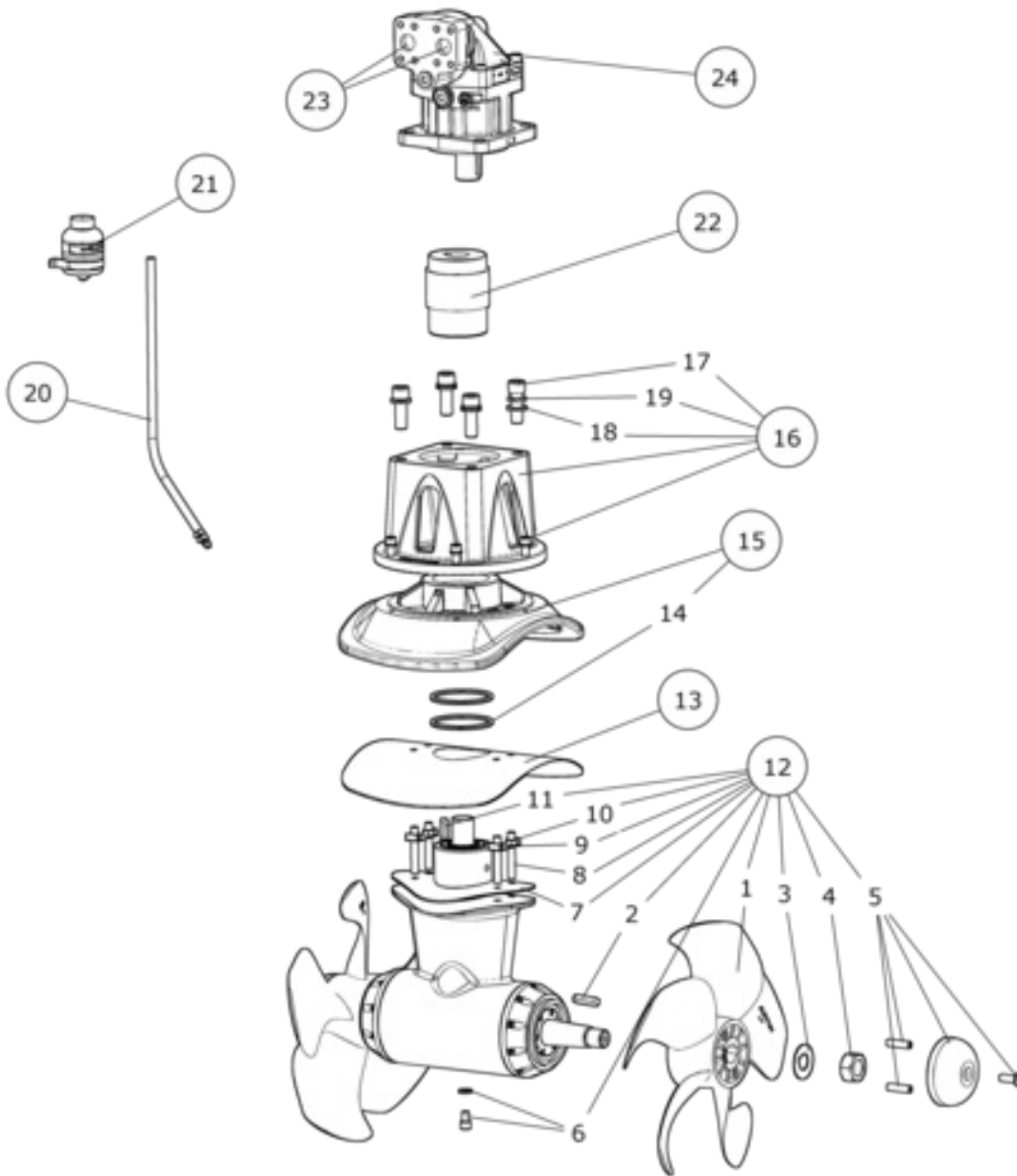


SH1000/513-BA110D13 - SH1000

Tunnel thruster, BA110

Spare parts (valid from 2017-12-18)



#	Description	Product
1	Propeller	70 1270 LH - Propell venstre SH1000
1b	Propeller	70 1270 RH - Propell høyre SH1000
2	Propeller key	70 1242 - Kile prop.aksel SH1000
3	Propeller washer	LSD-45 - Låseskive propellmutter 45mm
4	Locknut	PM 45 - Propellmutter 45mm
5	Anode Zink	70 1180 - Anode zink SH1000/SH1400
5b	Anode Alu	70 1180 A - Anode alu SH1000/1400
6	Oil drain screw with gasket	50 1220 - Oljeplugg
7	Gasket (between gearleg and tunnel)	70 1312 - Pakning girhus SH1000
8	Gearleg bolt	70 1080 - Festebolt A4-80
9	Gearleg washer plate	70 1241 - Låseblekke
10	Nut	21203 - Hex nut
11	Drive shaft key	70 1244 - Key Drive shaft SH1000
12	Complete gearleg w/props	70 0601 - Gearleg Assy Ø513 W/props
12b	Complete gearleg without props	70 0600 - Gearhus montert SH1000
12c	Complete gearleg remanufactured	70 0605 - Gearhus,bytte SH1000
13	Gasket(between tunnel and motor bracket)	70 1313 - Pakning girhus SH1000
14	O-ring seals in motor bracket	70 1302 - O-ring
15	Lower motor bracket	70 0502 - Brakett nedre del komplett
16	Upper motor bracket w/bolts	70 0503 - Brakett øvre del Komplett
17	Motor bolt	110009 - Skrue M20 x 60 Unbraco
18	Motor bolt washer	50 1181 - Skive
19	Motor bolt spring washer	115003 - Sprengskive
20	Oil hose with hose clamps	20 0400 - Olje slange 2,5m med 3klemmer 327034-12
21	Oil container with bracket	20 0300 - Olje beholder med klemme
22	Complete flexible coupling	[Archived] 000-0096-76 - Eagle repaire Ultra Classic
22a	Gear motor, G70	70 1462 - Flex kobl. Rotex 42.40/Ø31,75
22b	Gear motor, G75	70 1462 - Flex kobl. Rotex 42.40/Ø31,75
22c	Gear motor, G80	70 1462 - Flex kobl. Rotex 42.40/Ø31,75
22d	Bent axis piston motor, BA60	70 1465 - Flex kobling Rotex 42 Ø40/14T
22e	Bent axis piston motor, BA75	70 1465 - Flex kobling Rotex 42 Ø40/14T
22f	Bent axis piston motor, BA80	70 1466 - Flex kobling Rotex 42 Ø40/17T
22g	Bent axis piston motor, BA90	70 1465 - Flex kobling Rotex 42 Ø40/14T
22h	Bent axis piston motor, BA110	70 1464 - Flex kobling Rotex 42.40/13T
22i	Bent axis piston motor, BA125	70 1464 - Flex kobling Rotex 42.40/13T
23	Port flange kit: (Separately from motor)	[Archived] 000-0096-76 - Eagle repaire Ultra Classic
23a	Gear motor, G70	n/a
23b	Gear motor, G75	n/a
23c	Gear motor, G80	n/a
23d	Bent axis piston motor, BA60	FL-6000-34-UNC - Flange kit SAE6000 3/4"
23e	Bent axis piston motor, BA75	FL-6000-1-UNC - Flange kit SAE6000 1"
23f	Bent axis piston motor, BA80	FL-6000-1-UNC - Flange kit SAE6000 1"
23g	Bent axis piston motor, BA90	FL-6000-1-UNC - Flange kit SAE6000 1"
23h	Bent axis piston motor, BA110	FL-6000-114-UNC - Flange kit SAE6000 1 1/4"
23i	Bent axis piston motor, BA125	FL-6000-114-UNC - Flange kit SAE6000 1 1/4"
24	Hyd. Motor assembly options:	[Archived] 000-0096-76 - Eagle repaire Ultra Classic
24a	Gear motor, G70	72100/G-70 - Hydraulikk motor 70ccm

24b	Gear motor, G75	72100/G-75 - Hydraulikk motor 75ccm
24c	Gear motor, G80	72100/G-80 - Hydraulikk motor 80ccm
24d	Bent axis piston motor, BA60	72100/BA60 - Hydraulikk motor 60cc BentAxis
24e	Bent axis piston motor, BA75	72100/BA75 - Hyd motor 75 ccm Bent Axis
24f	Bent axis piston motor, BA80	72100/F12-080-C4C17 - Hyd motor 80 ccm Bent Axis
24g	Bent axis piston motor, BA90	72100/AA2FM-090-C14 - Hyd motor 90 ccm Bent Axis
24h	Bent axis piston motor, BA110	72100/F12-110-D4D13 - Hyd motor 110ccm Bent Axis
24i	Bent axis piston motor, BA125	72100/AA2FM-125-D13 - Hyd motor 125 ccm Bent Axis

The installer alone has responsibility for the installation of the spare parts. Side-Power only warranty the spare parts supplied only.

The information given in the document was correct at the time it was published. However, Sleipner Motor AS can not accept liability for any inaccuracies or omissions it may contain. Continuous product improvement may change the product specifications without notice. Therefore, Sleipner Motor AS can not accept liability for any possible differences between product and document.