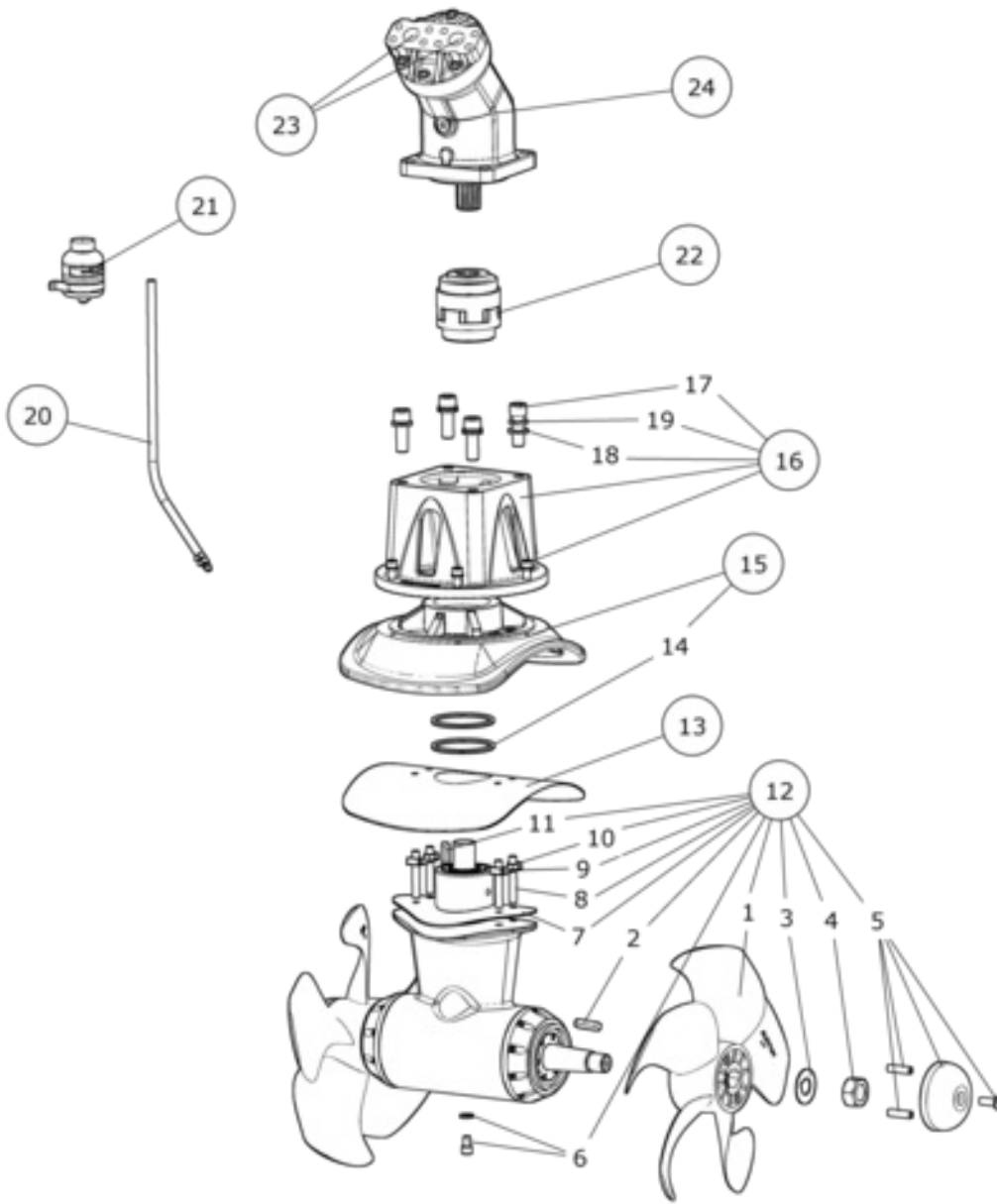


# SH1400/610-BA125 - SH1400 Tunnel thruster, BA125



Spare parts (valid from 2017-12-18)



| #   | Description                              | Product  |
|-----|--|--|
| 1   | Propeller                                | 100 1270 LH - Propell venstre SH1400                 |
| 1b  | Propeller                                | 100 1270 RH - Propell høyre SH1400                   |
| 2   | Propeller key                            | 70 1242 - Kile prop.aksel SH1000                     |
| 3   | Propeller washer                         | LSD-45 - Låseskive propellmutter 45mm                |
| 4   | Locknut                                  | PM 45 - Propellmutter 45mm                           |
| 5   | Anode Zink                               | 70 1180 - Anode zink SH1000/SH1400                   |
| 5b  | Anode Alu                                | 70 1180 A - Anode alu SH1000/1400                    |
| 6   | Oil drain screw with gasket              | 50 1220 - Oljeplugg                                  |
| 7   | Gasket (between gearleg and tunnel)      | 70 1312 - Pakning girhus SH1000                      |
| 8   | Gearleg bolt                             | 70 1080 - Festebolt A4-80                            |
| 9   | Gearleg washer plate                     | 70 1241 - Låseblekke                                 |
| 10  | Nut                                      | 21203 - Hex nut                                      |
| 11  | Drive shaft key                          | 70 1244 - Key Drive shaft SH1000                     |
| 12  | Complete gearleg                         | 100 0600 - Girhus montert SH1400                     |
| 13  | Gasket(between tunnel and motor bracket) | 70 1313 - Pakning girhus SH1000                      |
| 14  | O-ring seals in motor bracket            | 70 1302 - O-ring                                     |
| 15  | Lower motor bracket                      | 100 0502 - Brakett nedre montert SH1400              |
| 16  | Upper motor bracket w/bolts              | 100 0503 - Brakett øvre montert SH1400               |
| 17  | Motor bolt                               | 110009 - Skrue M20 x 60 Unbraco                      |
| 18  | Motor bolt washer                        | 50 1181 - Skive                                      |
| 19  | Motor bolt spring washer                 | 115003 - Sprengskive                                 |
| 20  | Oil hose with hose clamps                | 20 0400 - Olje slange 2,5m med 3klemmer 327034-12    |
| 21  | Oil container with bracket               | 20 0300 - Olje beholder med klemme                   |
| 22  | Complete flexible coupling               | [Archived] 000-0096-76 - Eagle repaire Ultra Classic |
| 22a | Bent axis piston motor, BA110            | 100 1465 - Flex kobling Rotex 55 Ø45/13T             |
| 22b | Bent axis piston motor, BA125            | 100 1465 - Flex kobling Rotex 55 Ø45/13T             |
| 22c | Bent axis piston motor, BA160            | 100 1465 - Flex kobling Rotex 55 Ø45/13T             |
| 22d | Bent axis piston motor, BA180            | 100 1465 - Flex kobling Rotex 55 Ø45/13T             |
| 23  | Port flange kit: (Separately from motor) | [Archived] 000-0096-76 - Eagle repaire Ultra Classic |
| 23a | Bent axis piston motor, BA110            | FL-6000-114-UNC - Flange kit SAE6000 11/4"           |
| 23b | Bent axis piston motor, BA125            | FL-6000-114-UNC - Flange kit SAE6000 11/4"           |
| 23c | Bent axis piston motor, BA160            | FL-6000-114-UNC - Flange kit SAE6000 11/4"           |
| 23d | Bent axis piston motor, BA180            | FL-6000-114-UNC - Flange kit SAE6000 11/4"           |
| 24  | Hyd. Motor assembly options:             | [Archived] 000-0096-76 - Eagle repaire Ultra Classic |
| 24a | Bent axis piston motor, BA110            | 72100/AA2FM-110-D13                                  |
| 24b | Bent axis piston motor, BA125            | 72100/AA2FM-125-D13 - Hyd motor 125 ccm Bent Axis    |
| 24c | Bent axis piston motor, BA160            | 72100/AA2FM-160-D13 - Hyd motor 160 ccm Bent Axis    |
| 24d | Bent axis piston motor, BA180            | 72100/AA2FM-180-D13 - Hyd motor 180 ccm Bent Axis    |

The installer alone has responsibility for the installation of the spare parts. Side-Power only warranty the spare parts supplied only.

The information given in the document was correct at the time it was published. However, Sleipner Motor AS can not accept liability for any inaccuracies or omissions it may contain. Continuous product improvement may change the product specifications without notice. Therefore, Sleipner Motor AS can not accept liability for any possible differences between product and document.