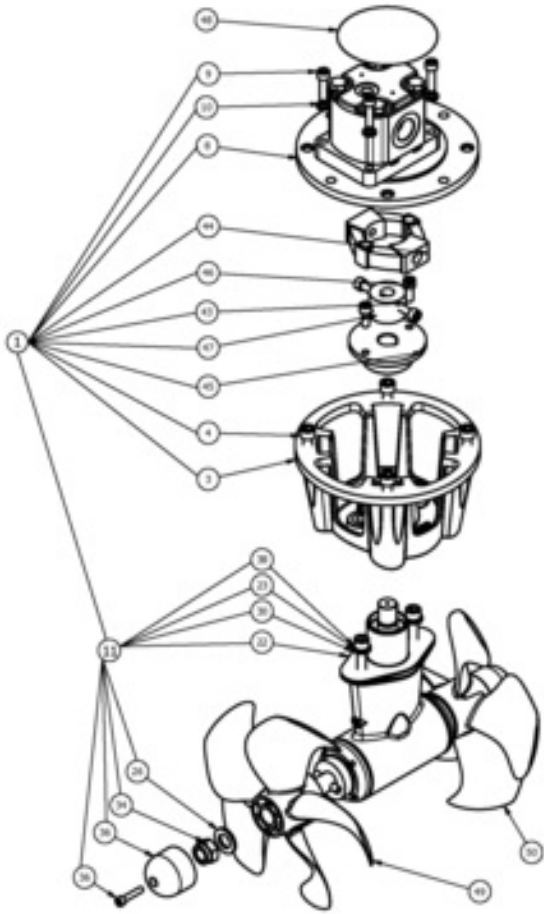


SH240/250TC-U08 - SH240 Tunnel thruster, U08

Spare parts (valid from 2020-07-14)



#	Description	Product
1	SH240 / 250TC 8-19ccm	01-03-250-102
3	Engine bracket SE130-170	01-02-125-105
4	DIN 912 - M10 x 25	10 1360 - Skrue M10 x 25 Unbraco
8	Hydplate	10 21301 - Hyd. plate maskinert SH100/220
9	DIN 912 - M8 x 30	6 1360 - Skrue M8 x 30 Unbraco
10	DIN 127 - A 8	208127 - Sprengskive M8 A4
11	Girhus mont. u / propeller	SM159957
22	10 1312 Gasket SE130-170 2mm	10 1312 - Pakning mot tunnel 2mm SE130/1
23	DIN 128 - A10	10 1363 - Sprengskive
26	DIN 125 - A 17	20 1181 - Skive
30	DIN 125 - A 10.5	10 1362 - Washer
34	DIN 985 - M16x2	10 1260 - DIN985 M16 CZ132
36	Alu anode	SM-143716
38	DIN 912 - M10 x 50	10 1080 - Skrue M10 x 50 Unbraco
43	Cylindrical boss N1, Ø15, L-28mm	SM-102785
44	Flex coupling element size 2	SM-102788
45	Flex coupling metal to 20 1450	SM-103009
46	DIN 912 - M8 x 20	11820 - Skrue M8 x 20 Unbraco
47	DIN 916 - M6 x 12	10612 - Gjengestift
48	Label	SM-120822
49	Propeller Ø250 RH	SM-148600 - Propell Ø250 RH
50	Propeller Ø250 LH	SM-148601 - Propell Ø250 LH

The installer alone has responsibility for the installation of the spare parts. Side-Power only warranty the spare parts supplied only.

The information given in the document was correct at the time it was published. However, Sleipner Motor AS can not accept liability for any inaccuracies or omissions it may contain. Continuous product improvement may change the product specifications without notice. Therefore, Sleipner Motor AS can not accept liability for any possible differences between product and document.