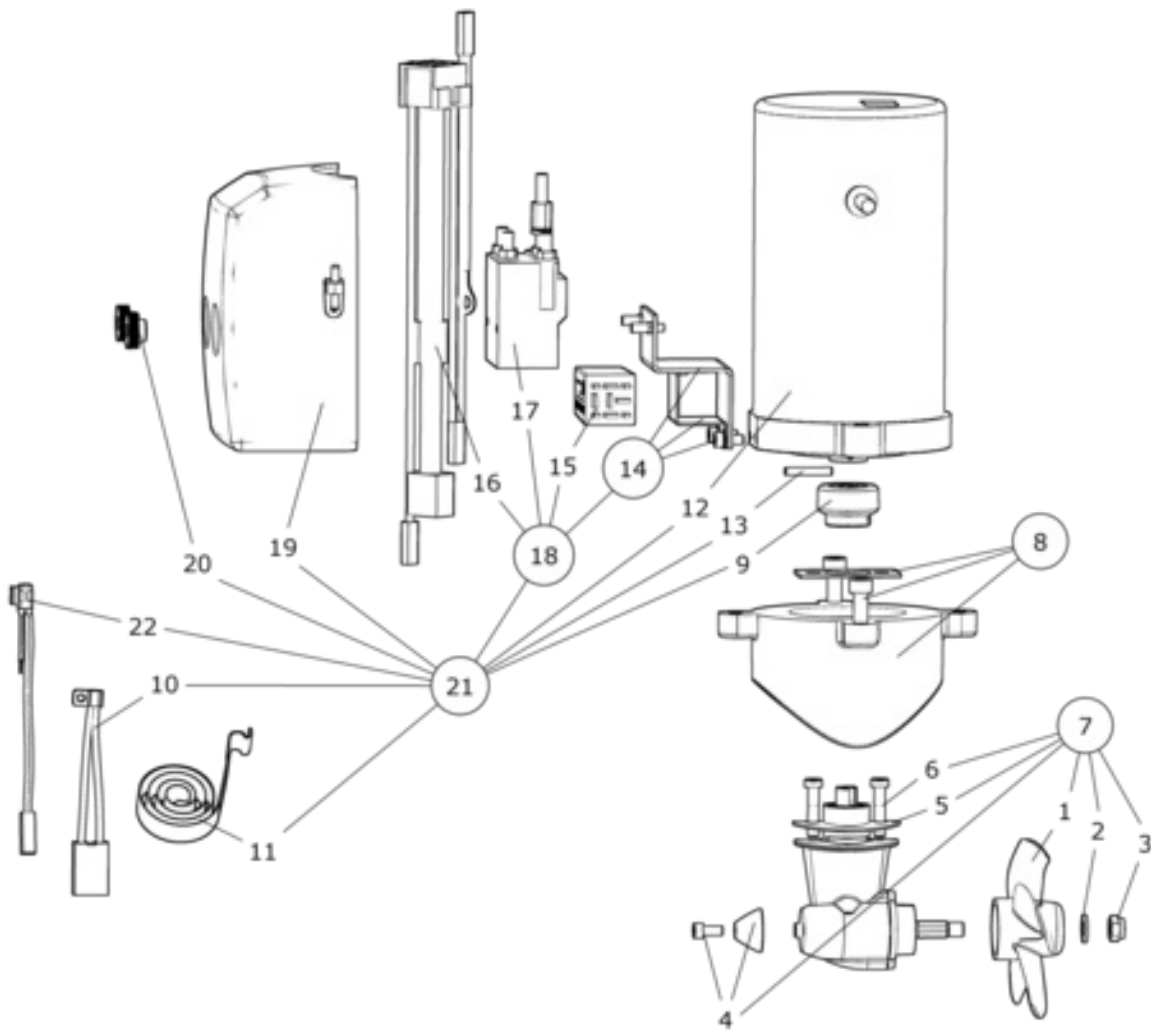


SE25/110S - SE25 Tunnel thruster, 12V



SIDE-POWER

Spare parts (valid from 2019-02-04)



#	Description	Product
1	Propeller	SM-125960 - Propell SE25
2	Propeller washer	208125 - Skive
3	Locknut	3 1250 - Låsemutter
4	Anode	3 1180 A - Alu/sinkanode SE30/40/50 SX35/50
5	Gasket	3 1310 10 - Pakning tunnel SE40 vekshus/br
6	Gearleg bolt	110033 - Skrue M6 x30
7	Complete gearleg	2 0600 - Girhus komplett SE20..25
8	Complete motor bracket	SM-126302 - Motorbrakett SE20/25
9	Complete flexible coupling	SM-128472 - Kobling m/låsepinne
10	Brushes for motor (kit)**	**
11	Brush springs for motor (kit)**	**
12	Electric motor	N/A
13	Key for electric motor shaft	112032 - Pinne 4 x 28
14	Solenoid bracket kit	2 0135 - Solenoid bracket kit SE30
15	Electronic control box	6 1232 I - Forsinkelsesrele 12/24
16	Internal wiring loom	6 1200 B - Internkobling SE30
17	Solenoid	41571123 - Rele m/sett skrue SE30
18	Complete solenoid kit	2 0131 12 - Complete solenoid kit SE30
19	Solenoid Cover	3 2024 - Reledeksel SE30
20	Nut for solenoid cover	6 8810 - Mutter for deksel SE80-SP285
21	Complete electric motor assembly	2 0105 12 - Elektromotor mont SE25-12V
22	Temp switch*	*

The installer alone has responsibility for the installation of the spare parts. Side-Power only warranty the spare parts supplied only.

The information given in the document was correct at the time it was published. However, Sleipner Motor AS can not accept liability for any inaccuracies or omissions it may contain. Continuous product improvement may change the product specifications without notice. Therefore, Sleipner Motor AS can not accept liability for any possible differences between product and document.